



1 SLIGHTLY THICK



Use of Level 1 Slightly Thick Liquids for Adults

What is this thickness level?

Level 1 - Slightly Thick drinks:

- ✓ Are thicker than water
- ✓ Can flow through a straw

Why is this thickness level used for adults?

Level 1 – Slightly Thick is most often used if you have swallowing problems with thin liquids. Slightly Thick liquids are thicker than water, but still thin enough to flow through a straw.

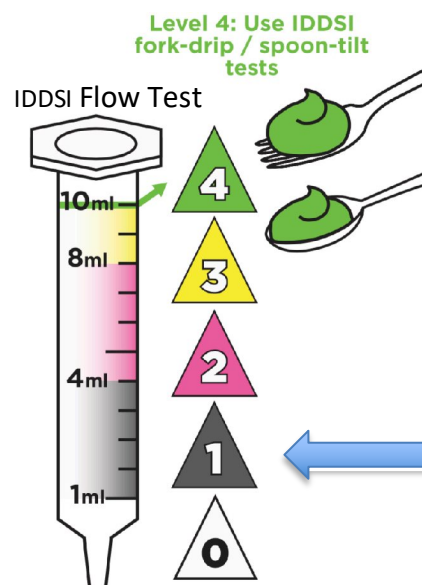
Some drinks may naturally be slightly thick (like some fruit nectars or milks). Thin liquids like water, milk, tea, coffee, juice and others may need to be thickened to the Slightly Thick level.

Your clinician will help you find a thickener to help thicken your drinks, or help you find some pre-thickened drinks. Slightly Thick drinks can be taken using a straw or from a standard cup.

How do I measure my liquid or drink to make sure it is Level 1 Slightly Thick?

It is safest to measure the thickness using the IDDSI Flow Test. The IDDSI Flow Test measures how thick a liquid is by how much goes through a 10 mL syringe in 10 seconds. IDDSI recommends that you use a 10 mL syringe to check to make sure you have the correct thickness level using the instructions below.

For Level 1- Slightly Thick liquids, there should be **1-4 mL remaining** in the syringe after 10 seconds of flow. Your clinician may give you a specific number between 1-4 mL to aim for.

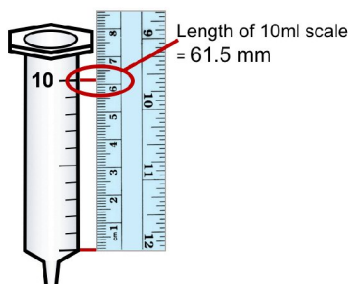


See videos of the IDDSI Flow Test at

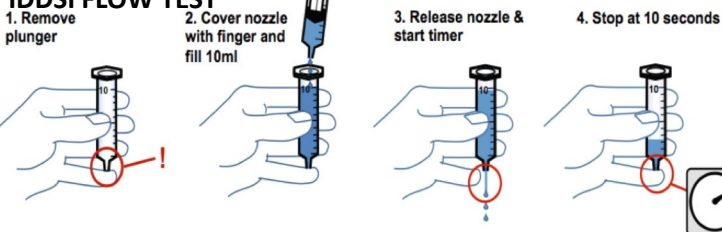
www.IDDSI.org/framework/drink-testing-methods/

Before you test...

You **must check** your syringe length because there are differences in syringe lengths. Your syringe should look like this



IDDSI FLOW TEST



Intended for general information only. Please consult with your health care professional for specific advice for your needs